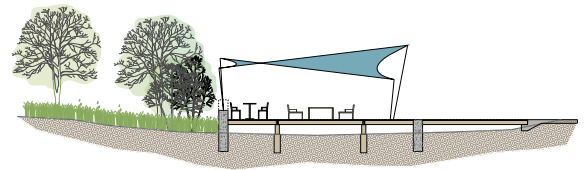
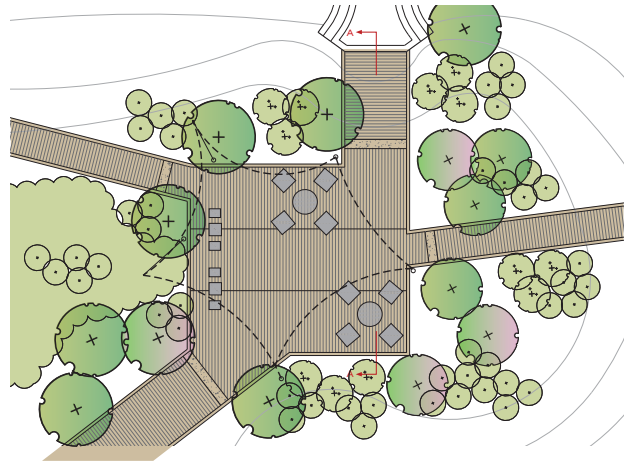


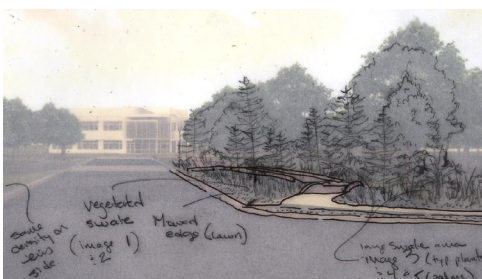
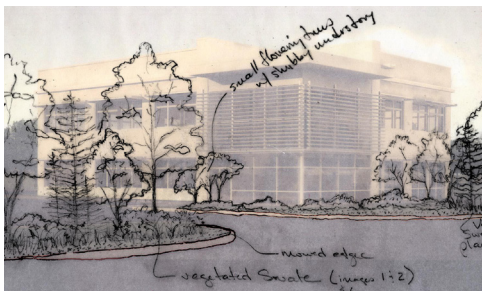
Rockefeller Group Corporate Center

Location: Lake Mary, Florida
Client: Rockefeller Group
Size: 31 acres
Cost: Confidential
Status: On hold

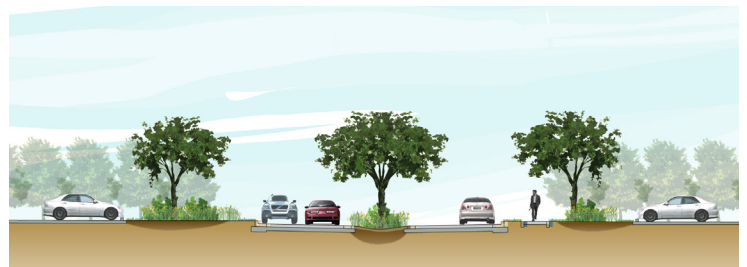
Viridian lead the ecological team working with the Rockefeller Group to rethink Rockefeller's approach to land development within a context of natural systems thinking. The Lake Mary commercial development was the first Florida project for which the Rockefeller Group pursued alternative stormwater management, native vegetation and creative soils management. Viridian developed the site plan paying careful attention to the client's needs, Florida ecosystems and local regulations. They developed a pedestrian walking system woven between available lots for future tenant use. This path network is nestled into a restored habitat of native trees, shrubs and ground covers. It includes boardwalks, over restored wet habitats, overlooks at rain water features and a clear way-finding system. The project also showcased native vegetation along street front and boulevard views as a sign to users and passersby that at St. Mary, the Rockefeller Group is thinking about development in a new way beneficial to man and nature.



Terraces and boardwalks are nestled into the landscape.



Native plants recall Florida's forests.



Boulevards and pedestrian walks are framed by plants which manage rainwater and showcase native plants.