

Camp Speers - Eljabar YMCA

Location: Dingman's Ferry, Pennsylvania

Client: Camp Speers

Size: 450 acres

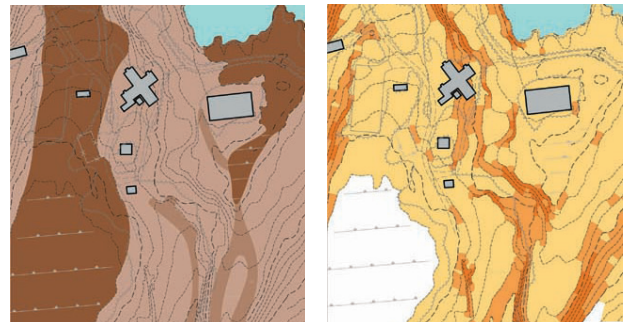
Cost: \$3 million

Status: Design and documentation completed 2003

The Camp Speers-Eljabar YMCA mission—to promote values of caring, honesty, respect and responsibility through understanding the natural world—dovetails with the mission of Viridian Landscape Studio. VLS is working with the camp to develop sites and landscapes for a new Multi-purpose Building and Dining Hall. Each building is carefully placed within the matrix of the Appalachian oak/hickory forest to preserve and restore natural features while responding to basic camp needs of circulation, gathering, play, and maintenance. Special outdoor spaces include arrival/gathering areas, a council ring, an amphitheater, and dual purpose 'green' parking areas/play fields. The project incorporates simple, local and durable materials. The model for construction, site preservation and landscape restoration created by this project will become the template for future projects. It will ensure that the basic resources of place, which enrich the camp experience, are preserved for future generations. Ecological stormwater management have also been integrated into this project design.

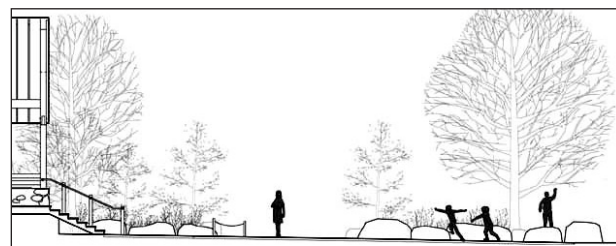


View of the lake from the Speers Dining Hall

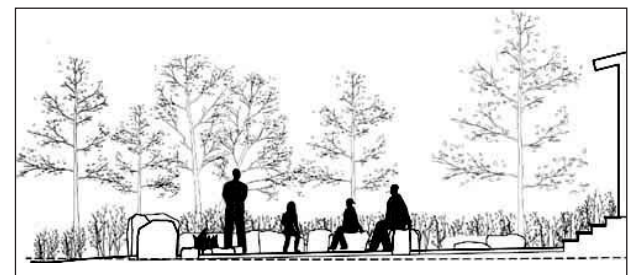
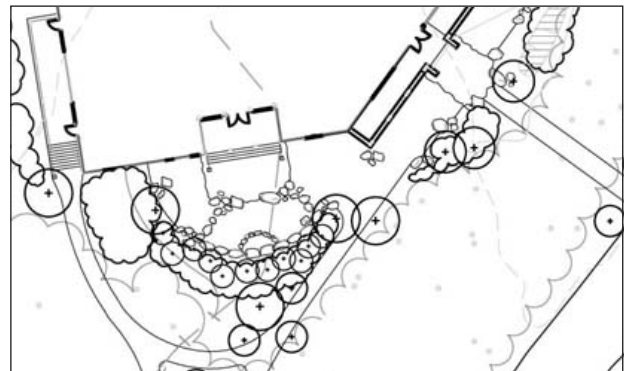


Physiographic analysis, Speers Dining Hall

Slope analysis, Speers Dining Hall



Speers Dining Hall, detail plan and section at arrival court



Eljabar Lodge, detail plan and section at Council Ring