

## Fairmount Park Concourse Lake

Location: Philadelphia, Pennsylvania,

Client: Fairmount Park v/ Garden Club of America

Status: Conceptual Plans Implemented by GGA 2012

The restoration of Concourse Lake showcases Pennsylvania's native trees within habitat settings thus moving away from a conventional arboretum approach that showcases individual specimen trees. Trees are arranged not in the formal rows and lines of days gone by, but rather planted to showcase the seeding and spreading habits of the various trees. This approach fosters an appreciation of our forested landscapes which once covered 99% of the eastern United States, supporting a healthy hydrologic cycle. It creates dynamic zones of varied atmosphere that feel complete after the initial planting. The project builds upon the existing landscape zones and plantings can be elaborated on over time to include shrubs, grasses and ground covers thus completing each mini-forest ecosystem.

Each zone includes a different type of gathering place for people from large scale picnic groves to intimate teaching areas. The zones are interconnected by a path that weaves in and out, toward and away from Concourse Lake.

A. Belmont - North Concourse Entrance Persimmon and Paw-Paw Entrance Walk: These colorful fruit-bearing trees are planted in little copses. Once the trees reach fruit-bearing age, children can harvest the staples of early American diet and make their own pies and preserves.

B. Rhododendron and Azalea Woodland Restoration: Native azaleas and rhododendron interplanted amongst the mature trees and shrubs enrich this mini-woodland by adding seasonal color and texture.

C. Bald Cypress Wetland/ Redbud and Elm Grove: Additional Cypress trees build upon the restoration of Concourse Lake into a working wetland and pond. These trees are planted in pure multi-aged groves to replicate the feel of an ancient Cypress swamp. Adjacent to this overlook point, Elms and Redbud make spectacular partners.



Picnic Grove

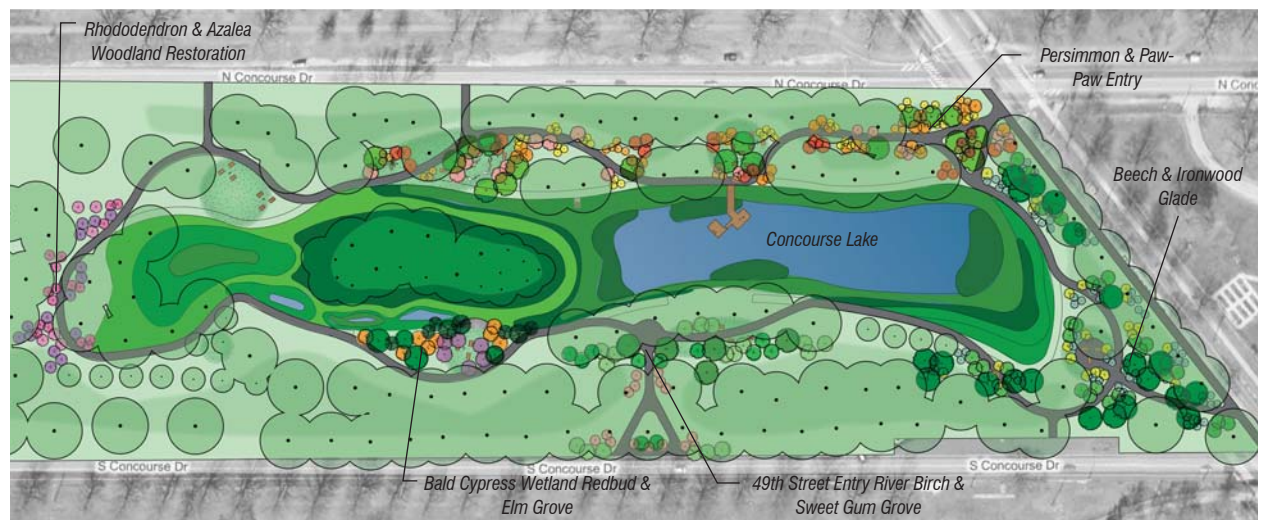


Cypress Grove Pond Access

The Elms, a predominant American street tree until Dutch elm disease, are of new, disease resistant varieties. Redbud, planted just inside and at edges of the Elm groves follow available light.

D. 49th Street Entrance: Sweet Gum Grove: Sweet Gums often propagate via their roots and form amazing clumps and groves in nature. Here the trees are planted to mimic those patterns and form a stunning multi-age gateway for the neighborhood.

E: Belmont - South Concourse Entrance - Beech and Ironwood Glade: The center point of this new landscape is an existing Ironwood. This tree, once attended to by a qualified arborist, will be stunning. The summer months in a Beech/Ironwood Glade are spectacular, but it is the winter that provides an unusual experience. The Beech will hold its leaves and they will rustle and shimmer in the wind.



Rendered Plan showing event spaces which showcase native trees of Pennsylvania in a habitat setting

3868 Terrace Street | Philadelphia PA 19128 | t 215.482.7973 | f 215.482.7978 | www.viridianls.com