

Lindley Mural Arts Garden

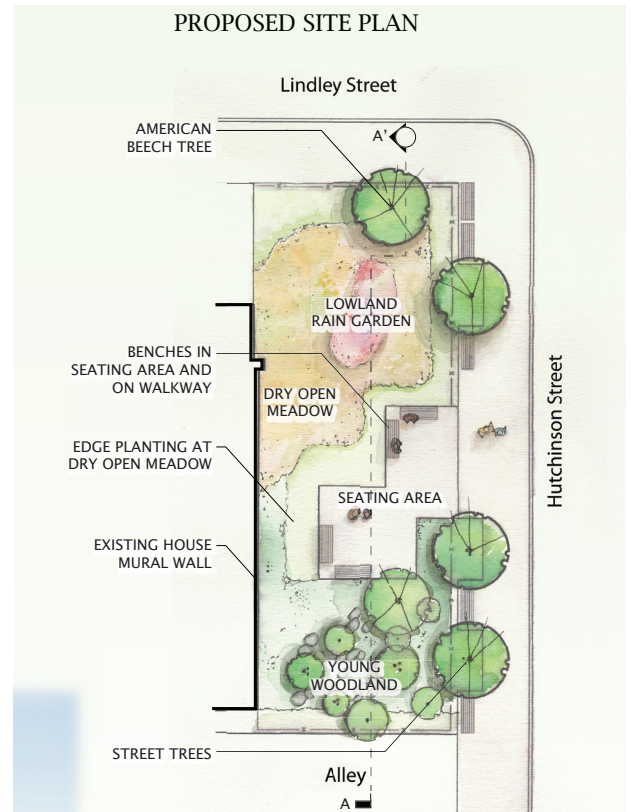
Location: Philadelphia, Pennsylvania
Client: Community Design Collaborative
Size: 3600 sf
Cost: \$10,000
Status: 2008

Viridian, teamed with Salt Design Studio and the Community Design Collaborative of Philadelphia, proposed a garden adjacent to a restored mural along Lindley Avenue that provided educational opportunities for the local community and accented the large-scale art work.

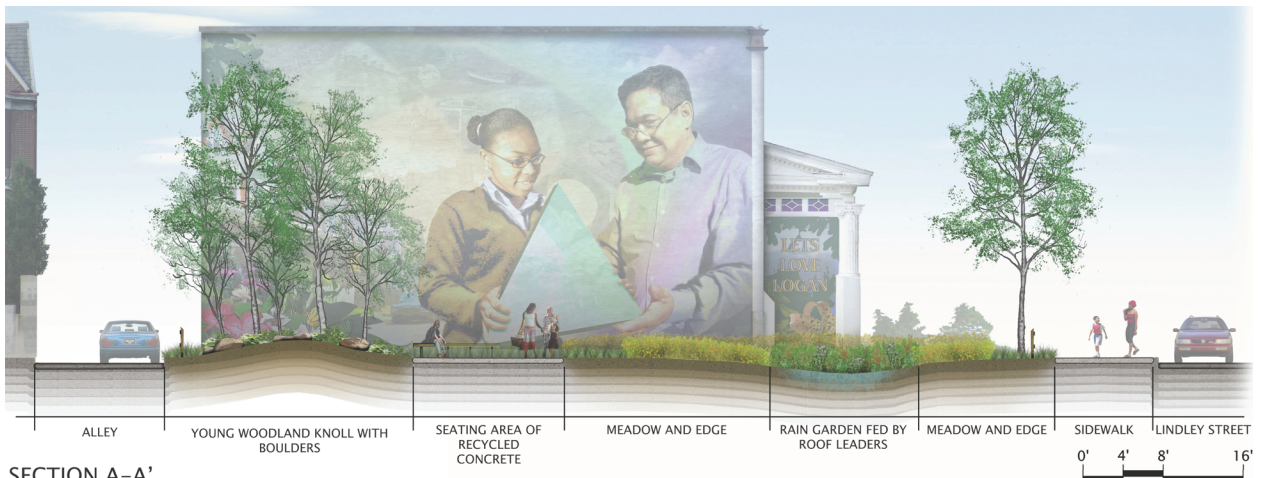
The design allows for visibility of the mural while providing a mix of ecological diversity in three native north eastern habitats; young woodland, dry open meadow, and lowland rain garden. A young woodland composed of varying sizes of American beech trees, successionaly bleeds into a dry open meadow, recalling the open fields that historically accompany edge habitats. The lowland rain garden captures rainwater from adjacent row homes, celebrating water while providing educational opportunities on sustainable stormwater management. A mix of native plants - little bluestem, purple love grass, coneflower, cardinal flower, and milkweed - provide habitat for a diversity of wildlife, limit maintenance worries, and offer year-round beauty to the site.



Native grasses, flowers and trees provide variety and beauty.



Rendered site plan



SECTION A-A'

Section through the young woodland, dry open meadow, and functioning lowland raingarden with mural beyond.