

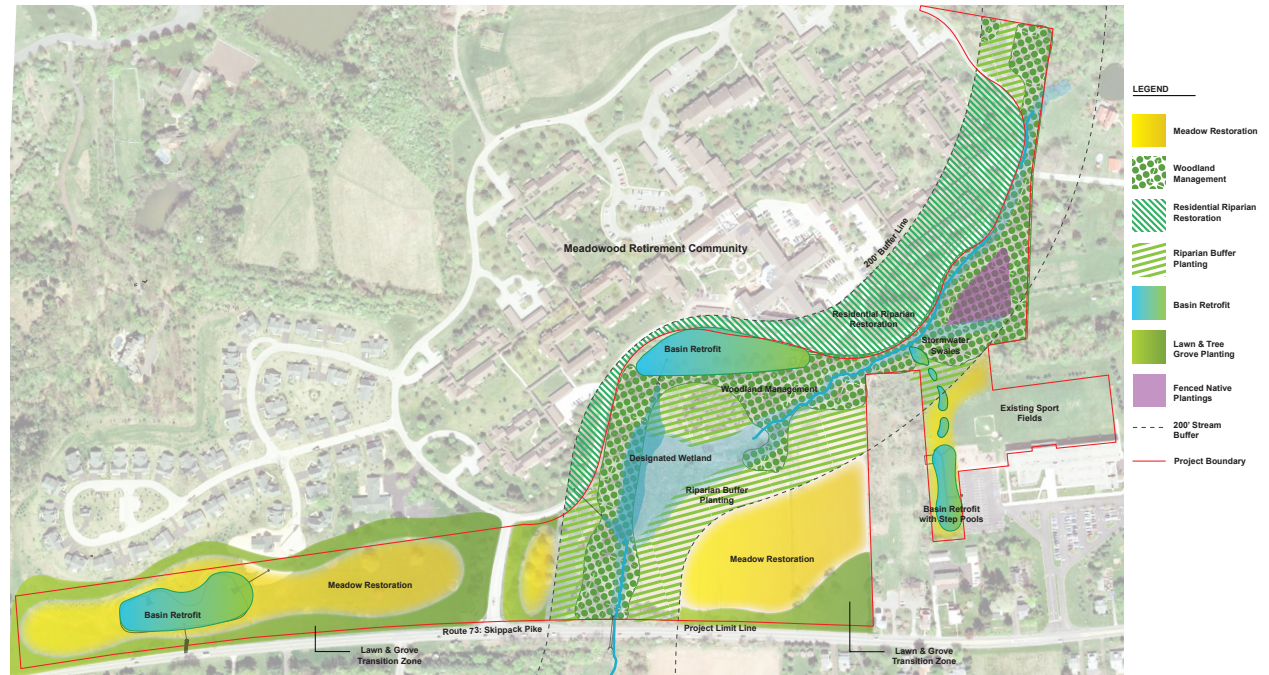
## Meadowood Nature Preserve: Conceptual Design for a Community Program

Location: Worcester, Pennsylvania

Client: Meadowood Retirement Community & Worcester Elementary School

When: 2010-2011

Cost: 2.4 Million



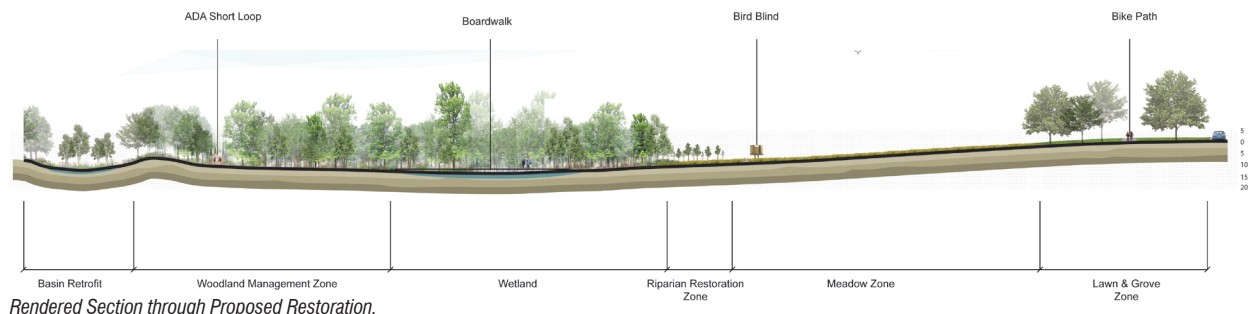
Site Restoration Overlay.

Viridian Landscape Studio, Meliora Environmental Design and the Community Design Collaborative were selected to develop a conceptual design and community program for a conceived Meadowood Nature Preserve, an ecologically rich site positioned between Meadowood Retirement Community and Worcester Elementary School. Located within a greater trail and green open space system, Viridian sought to make Meadowood a valuable community model for sustainable land management while fostering the unique opportunity for intergenerational learning.

In addition to addressing issues with site and ADA access, the design team implemented a landscape strategy that employs 'degrees of wildness,' simple interventions, both spatial and temporally, that protect the idyllic character of the site while enhancing its ecological diversity. Stormwater basin retrofits, stream buffer restoration, meadow conversion, lawn and grove planting, as well as woodland management zones provide rich educational opportunities for students and retirees alike. The design team investigated how the integration of site features such as a new trail system, stream monitoring stations, tree houses, outdoor classrooms, and bird blinds allow Meadowood to play a larger part in the implementation of elementary science and technology curriculum standards



Site Photos.



Rendered Section through Proposed Restoration.