

Riverbend Environmental Education Center

Location: Gladwyn, Pennsylvania

Client: Riverbend Environmental Center

Size: 30 acres

Cost: \$1 Million in Site Work and Landscape

Status: Master Plan completed 2004

Viridian Landscape Studio was the prime consultant in developing a Master Site Development Plan for this 30-acre environmental education site outside of Philadelphia. The plan included a phased landscape management plan, with consultant Dennis Burton, Director of Land Restoration for the Schuylkill Center for Environmental Education. Susan Maxman & Partners developed conceptual plans for new and renovated facilities. Phased site improvements included new parking and entry landscapes; ADA-accessible paths and siting for new facilities and landscape exhibits; and new interpretive educational themes for the grounds. In workshops with the staff and Board members, a Master Plan defined future needs, phased costs and fund-raising program.



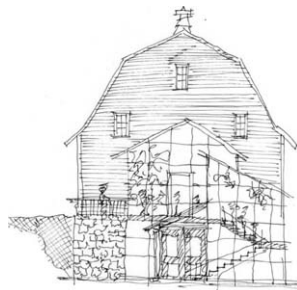
Aerial view of Riverbend site along the Schuylkill River.



Parking areas will be renovated with underground recharge beds and wetland swales.



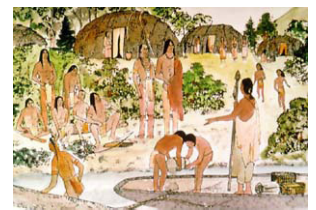
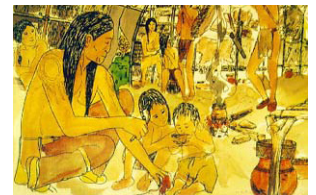
Plantings and defined paths will restore trampled streamside education areas.



Conceptual designs for a demonstration greenhouse and ADA-accessible entry to the existing barn, by Susan Maxman & Partners (at left); a phased landscape management plan (at right) was developed to eradicate invasive vegetation and develop new landscape habitat exhibits within a new path system. New educational and interpretive areas will capitalize on the site's historic Leni Lenape residents (at far right).



Storytelling places are off the paths.



Proliferating invasives include five-leaved akebia, multiflora rose, garlic mustard, Japanese knotweed, Japanese stiltgrass, and Oriental bittersweet. Deer overbrowse is severe.