

Tyler Arboretum Master Plan

Location: Media, Pennsylvania

Client: Tyler Arboretum

Size: 213 acres

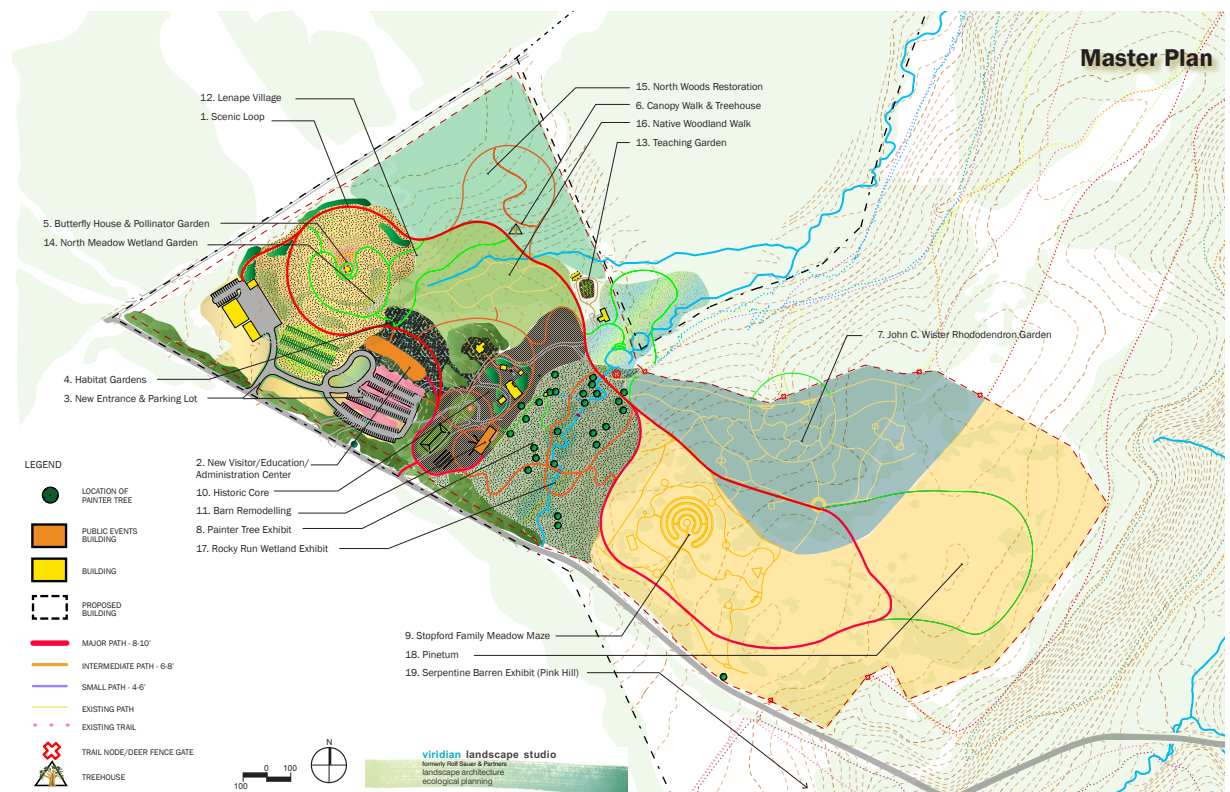
Cost: \$33 million

Status: Master Plan completed Summer 2008; client is fund raising for phase 1 projects.



Tyler Arboretum's new Strategic Vision and a view of the existing pond.

Viridian worked with Cahill Associates, SMP Architects, ecologist Roger Latham, and the client to develop a new master plan for Tyler Arboretum. The Arboretum is one of the largest privately held tracts of open space in Delaware County and is located in the middle of a highly developed watershed. Viridian is guiding the arboretum as they craft a new vision that will reaffirm their status as a must-see destination within the horticulturally rich region. Strategic objectives are being developed through meetings with the Arboretum board and staff. The team and client are developing options for integrating new exhibits and programs into the site including watershed initiatives and natural area strategies for ecological restoration. Concepts concerning circulation, plant collections, regional connections, building assessment and future building options are being explored.



Tyler Arboretum Master Plan - Example Project

Tyler is focusing its priorities on several 'core' areas, or pillars, in order to reach its full potential and leverage its success to broader audiences. Core pillars are the foundations that make up the arboretum.

Core Pillars:

Destination: Establish the Arboretum as a premier regional attraction.

Preservation: Preserve its lands and historic legacy for future generations.

Education: Strengthen the connection between people and nature through learning and inspiration.

Natural Resource Stewardship: Protect our natural resources through best management practices.

North Meadow Wetland Garden

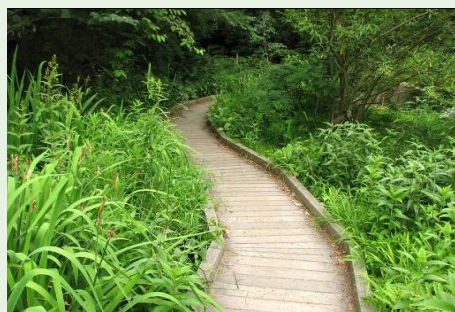
Project Description

This exhibit forms the backbone of the north end of the arboretum. The North Meadow Garden's landscape of native grasses, wildflowers and shrubs features both dry meadow and wet meadow ecotypes. In addition, wet meadows treat stormwater from the Maintenance Center and Ridley Creek Park in an ecologically sensitive manner protecting the first-order stream that flows to Rocky Run. Lush vernal pools can be viewed from a boardwalk network. The meadow garden houses the new Butterfly House/Pollinator Garden and enhanced Wister collection. The Lenni-Lenape Village exhibit is set at its edge. A pergola could be integrated into this area for teaching and special events. It may be associated with the boardwalks and vernal pools or sit higher on the hill nestled into an enhanced Crabapple collection.

Project Goals

Highlight the seasonal changes in this habitat and demonstrate the positive ecosystem services provided such as increased filtration and decreased runoff and erosion and enhanced habitat for songbirds, insects, and other wildlife.

Remove invasive vegetation and create small vernal pools and successional wetlands to protect the 1st order tributary to Rock Run.



Estimated Cost: \$1.5 Million

Plant an enriched meadow of herbaceous plants and shrubs.

Develop an interactive program for the garden.

Develop a secondary path system of mown paths and boardwalks that connects the major elements of the north meadow.

Demonstrate sustainable stormwater management.

Engage the Township and the neighbors to manage upstream runoff in a more sustainable manner.

Demonstrate stream protection measures.

Demonstrate practical, effective approaches to reclaiming wetland and meadow "ecosystem services," including increased infiltration, decreased storm water runoff, decreased erosion, reduced stream and pond contamination, sedimentation and eutrophication, and enhanced habitat for songbirds, butterflies and other native wildlife.

The "before" contrast could be provided using photographs on interpretive signs.

Education Themes

Pesticide-free gardening

Sustainable stormwater management

Stream restoration

Native meadows

Vernal wetlands

