

## Hamilton Walk at The University of Pennsylvania

Location: Philadelphia, Pennsylvania  
Client: University of Pennsylvania  
Size: 2.5 acres

Cost: \$2.4 million  
Status: 2009

Contact: Bob Lundgren, University Landscape Architect  
Phone: 215-898-1120

Viridian was hired to develop a schematic design for University of Pennsylvania's Hamilton Walk. Hamilton walk, formerly Pine Street, is now a major campus thoroughfare adjacent to dormitories and the medical science buildings on campus. The existing walk is primarily asphalt with steel edging, widened over the years resulting in a patchy and informal appearance. The walk currently boasts a mature tree canopy yet the landscape has no unifying feel. A complex underground network of utilities makes any intervention a challenge.



Rendering of the improvements to the Class of 1873 Memorial Gateway

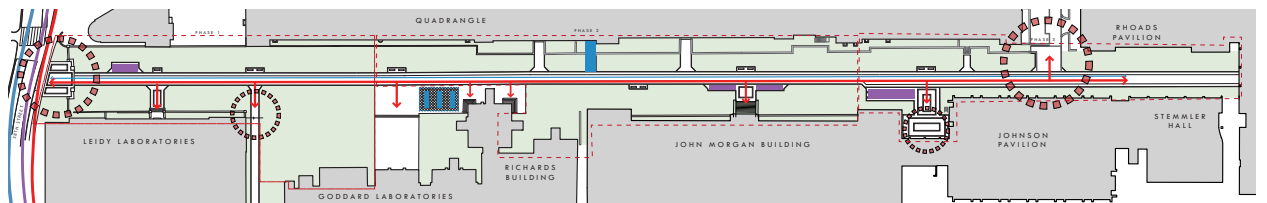
The main design drivers for Hamilton Walk included maintaining the tree canopy, alternative stormwater management, and off-peak service drive needs. Viridian respected the historic Hamilton walk width by proposing a 13'-8" walkway comprised of a granite curb, brick bands, and asphalt hexagonal pavers to meet campus standards. Student bike parking is addressed through the addition of three corrals located strategically along the walk.



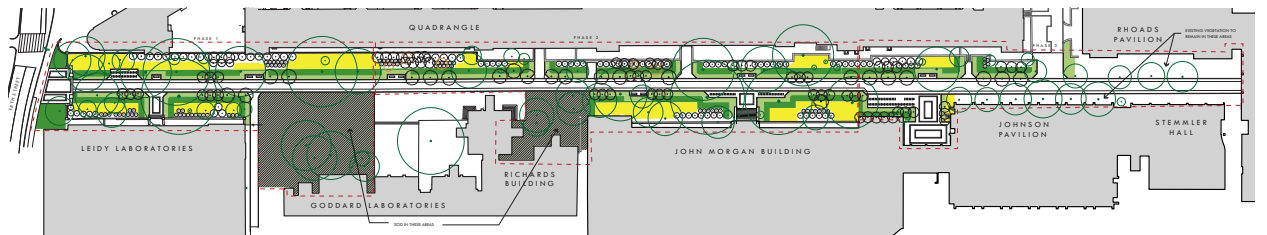
Existing conditions

Viridian proposed plantings along Hamilton Walk which relate to the historic ecological character of the site. Nearby is the bio pond, also known as Kaskey Park, which is a remnant of former pools and stream that fed the Schuylkill River.

Kaskey Park has become a horticulturally rich refuge on the campus and the university expressed concern about limited encroachment on this special landscape. Viridian proposed the creation of a Garden District to establish a hold on open space while providing a destination landscape along Hamilton Walk and Kaskey Park.



Proposed circulation system for service vehicles (blue), pedestrian (red), & bicycles (purple).



Proposed planting scheme of herbaceous perennials, shrubs and trees, reflecting the rich horticultural diversity of the area.